

SCFA – Training Bulletin (22-01)



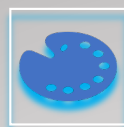
Properties of LPG



Heavier than air



Odorless – odorant added for domestic use



Colorless



Expansion ratio of
270 to 1



Flammability range
– 2.4%-9.5%



- **If on fire, do not extinguish.**
- **Keep cylinder cool with handline from a distance with a modified fog pattern.**
- **If the cylinder is leaking and there is no fire, check exposures with meters.**
- **Be concerned for potential ignition sources.**
- **Consider calling for a Haz Mat response.**

Visit our website www.scfa-li.org

